

SmartCAM[®] Autodesk Inventor[®] Connection[™] V17

Experience Powerful, Flexible, Affordable...SmartCAM

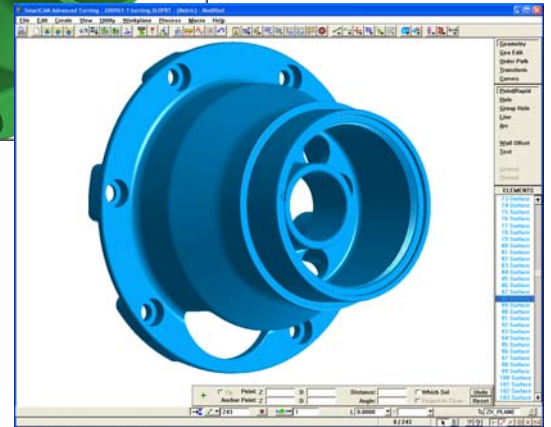
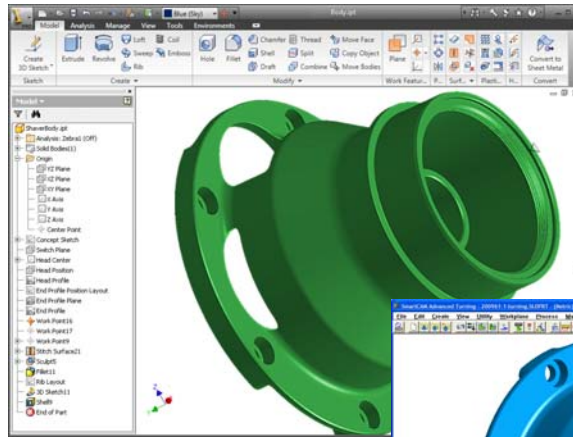
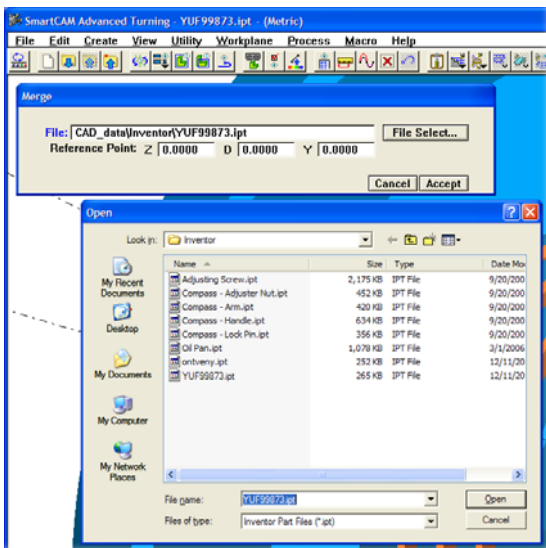
Provides
Seamlessly Integrated,
Native-Format
Data Translation for
Autodesk Inventor
Files

SmartCAM Inventor Connection

SmartCAM Inventor Connection[™] is an optional native-format data translator available for purchase. When installed on a system with SmartCAM[®], it allows users to read Autodesk[®] Inventor[®] part files directly into SmartCAM without need to use intermediate file formats such as STEP, IGES or SAT Solid.

Ease of Use

Once installed, the SmartCAM Inventor Connection is accessed directly via the File Open and Merge dialog boxes.



SmartCAM Inventor Connection Features

- **Reads .IPT Part Files**
Reads Autodesk Inventor .IPT files created in Inventor Version 6 through Inventor 2009.
- **Create Toolpath Directly from a Solid Model**
Solid Pocket Roughing and Solid Profile Finishing are available in FreeForm Machining, Advanced Milling and Advanced Turning.
- **Drag and Drop**
Your Autodesk Inventor files can be opened directly in your SmartCAM application using drag and drop.
- **Part Model Units**
Supports the metric or inch units of the solid model file.

System Requirements

Software

A SmartCAM Version 16.x base application must be installed on the system.

Other

No additional requirements beyond the SmartCAM V16.x base application requirements.

More Information

For more information on SmartCAM Inventor Connection, contact us through our website,

www.SmartCAMcnc.com

by email: info@SmartCAMcnc.com,

or by telephone: 541-344-4563.

SmartCAM^{cnc}

SmartCAM SmartCAM Inventor Connection are registered trademarks of SmartCAMcnc. All other trademarks or registered trademarks belong to their respective holders.
© 2010 SmartCAMcnc. All rights reserved.
LIT #: SIC-DATA-0610